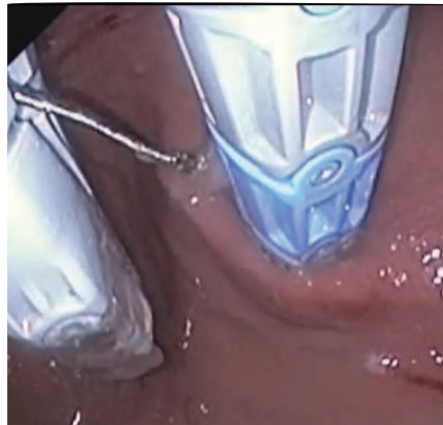


TIF[®] 2.0 Procedure with EsophyX[®] Z device

General order of EsophyX[®] device operation for TIF 2.0 Procedure



1
Insufflate stomach -
Engage tissue with
Helical Retractor



2
Release Helical Retractor cable
by opening Tissue Mold



3
Lock Helical Retractor



4
Set Fastener Ports proximal to
GEJ - proximal blue link
pulled into esophagus



5
De-sufflate stomach - slowly
retract tissue with Helical
Retractor in locked position



6
Wrap Tissue Mold toward
Lesser Curve - 11 and 1
o'clock positions only
(no wrap at 5 and 7
o'clock position)



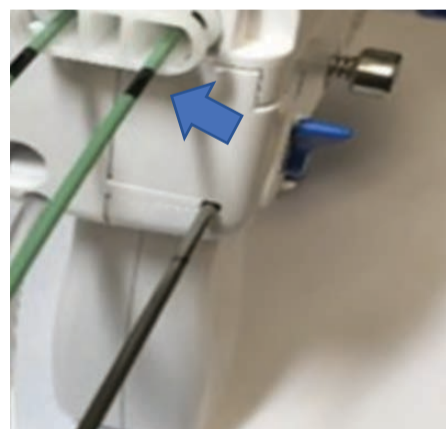
7
Close Tissue Mold to
auto-lock position



8
Invaginator on - Gently
advance EsophyX device
distally (confirm pre-proce-
dure EGD measurements)



9
Deliver SerosaFuse
Fasteners



10
Invaginator off - Reload
SerosaFuse Fasteners

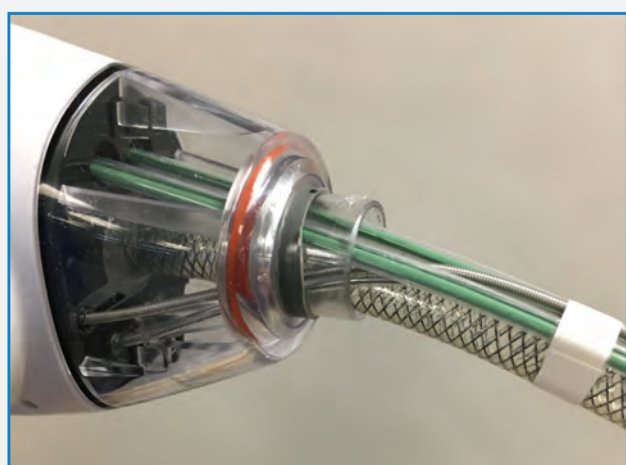
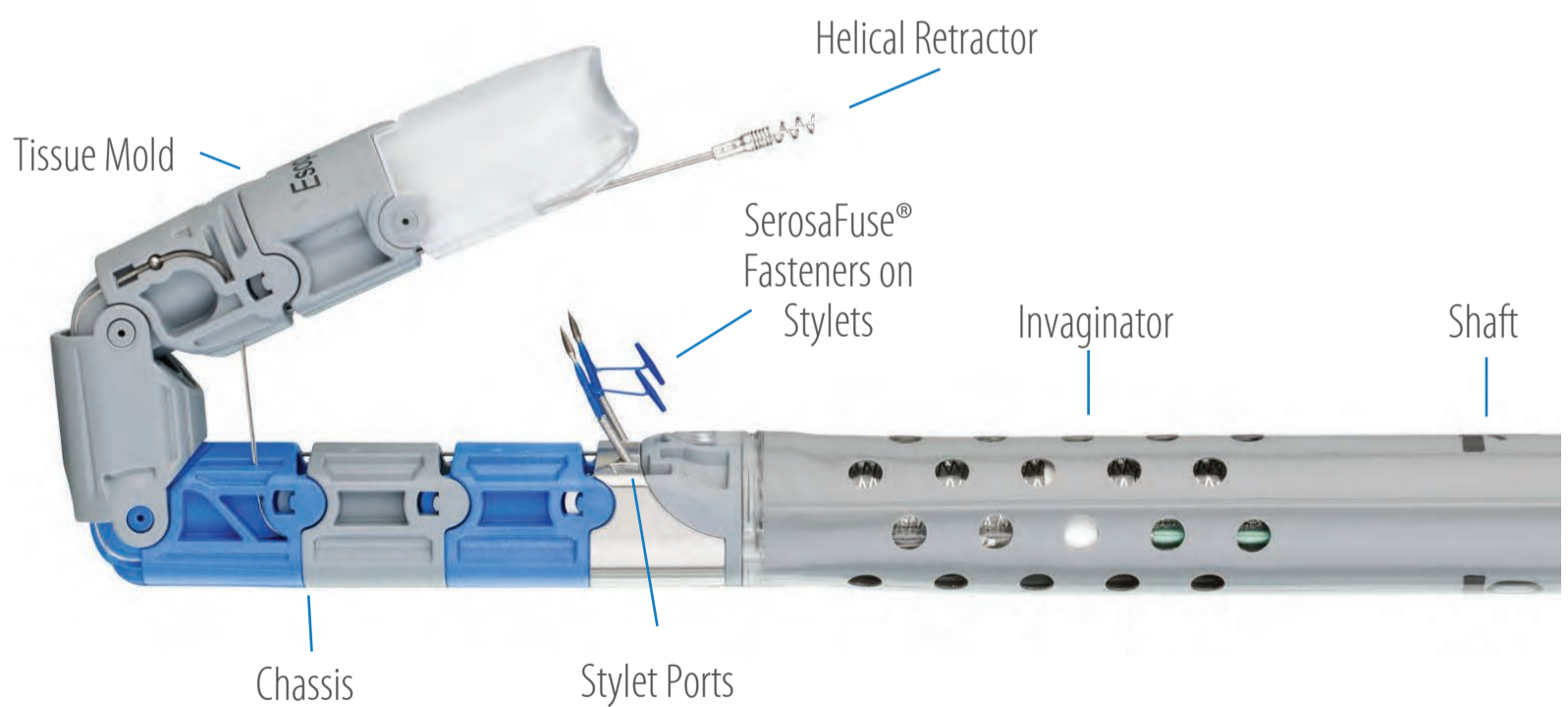
 **TIF[®]**
PROCEDURE
WITH EsophyX[®] DEVICE

This guide is intended to be a short summary of the EsophyX device Instructions for Use (IFU). Refer to the IFU for complete procedural steps.

EsophyX® Device: Physician Interface



EsophyX® Device: Patient Interface



Working Components of EsophyX device

Control Cable Detail Under Shaft of the Tube

- Silver coiled cable spring controls Tissue Mold Open/Close
- Silver cable in clear plastic tubing controls Helical Retractor
- Green cables are the Fastener Delivery Pushers